






eNBioAccess-T9

Face Recognition Terminal



Features

- 
High-Performance Face Recognition
 - Auto Tilt Dual Camera
- 
5" Touch Color LCD
 - Enhanced Touch Sensitivity
- 
Patented Live & Fake Finger Detection
 - Optical sensor and algorithm detect fake fingers (Paper, Film, Silicone, Rubber and Gelatin)
- 
Large Capacity Memory
 - 10,000 Face User (1:1)
 - 100,000 Fingerprint Template (1:N)
 - 100,000 Card User
 - 1,000,000 Transaction Log
- 
Multi-Authentication
 - Face, Fingerprint, Multi-Card, Pin

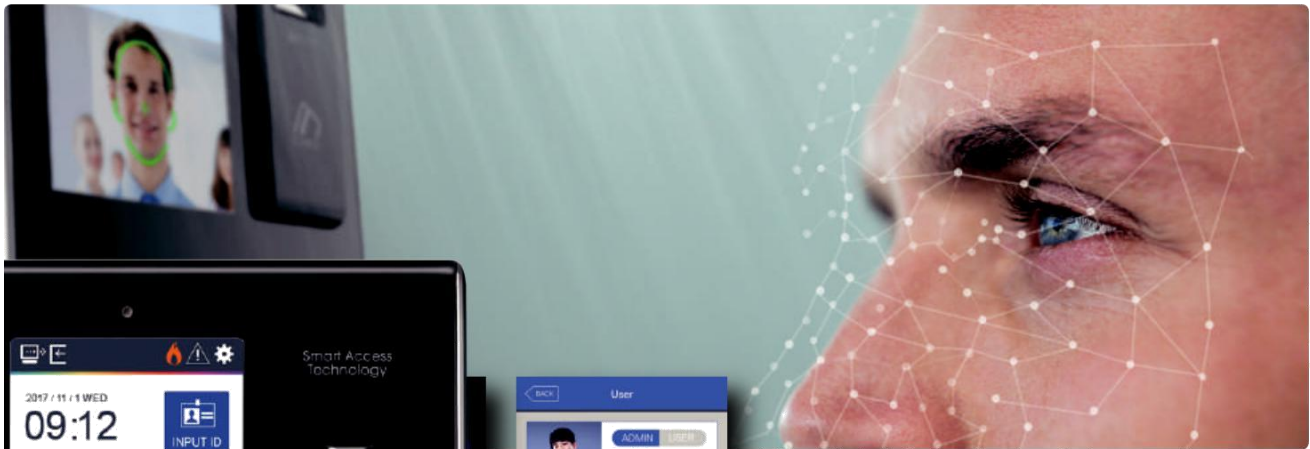
Specification

CPU	1Ghz Quad Core	Log Capacity	Log Capacity : 1,000,000 (Text Logs) / 20,000 (Image Logs)
Memory	4GB RAM + 8GB micro SD	Communication	TCP/IP Wi-Fi(Optional), Wiegand, RS-485, RS-232
Sensor	Optical / 500 DPI	Multi-Card Option	EM&Mifare (Dual), HID, iClass, Desfire
Authenticaiton Type	Face, Fingerprint, RF Card,Pin	Lock	Deadbolt, EM Lock, Door Strike, Automatic Door
Fingerprint Capacity	100,000 Template	Environment	-20~60°C / <RH 90%
Face Capacity	10,000 (1:1) / 2,000 (1:N)	Dimensions	149.5(W) x 208.5(H) x 46(D) mm



T-9 Face Recognition

Face recognition technology provides faster and higher security.



< T-9 GUI Interface >

- Large Capacity Memory
- High-Performance Face Recognition
- Reliable Light Condition
- 5" Color LCD with Touch Keypad
- Multimodal Authentication
- Multi-Card Reading
- High-Speed Searching Engine

Live And Fake Finger Detection

